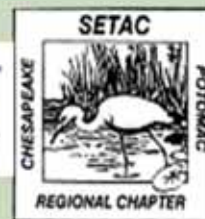




Chesapeake and Potomac Regional Chapter  
Society of Environmental Toxicology and Chemistry



## CPRC NEWS

*A Biannual Newsletter of the  
Chesapeake and Potomac Regional Chapter of the  
Society of Environmental Toxicology and Chemistry  
Vol 19, Number 1, Spring 2011*

### In This Issue

|                                    | Page |
|------------------------------------|------|
| Chapter Leadership                 | 2    |
| President's Corner                 | 3    |
| Spring Meeting Information         | 5    |
| Natural Resource Advisor Program   | 8    |
| Current Sponsors                   | 9    |
| Corporate Sponsorship Letter       | 10   |
| Meet the Officers & Board Members  | 11   |
| Chesapeake Bay Osprey              | 15   |
| The Student Pages                  | 16   |
| What CPRC Does                     | 18   |
| Upcoming SETAC Meetings            | 19   |
| EPA Earth Day on the National Mall | 20   |
| Extra Thoughts                     | 21   |
| Application for Membership         | 22   |

**Officers:**

President  
Joe Steinbacher  
Versar, Inc.

Past President  
Judi Durda  
Integral Consulting, Inc.

Vice President  
Larry Malizzi  
Matrix New World Engineering,  
Inc.

Treasurer  
Tom Purcell

Secretary  
Dan Lavoie  
CH2M Hill



**Board Members:**

Melissa Grabel  
US Environmental Protection Agency

Heather Govenor  
Michael Baker Corporation

Nazmul Haque  
Kleinfelder

Natalie Karouna-Renier  
USGS Patuxent Wildlife Research Center

Todd Stueckle  
National Institute for Occupational Safety  
and Health

Rebecca Lazarus  
(Student Representative)  
University of Maryland, College Park

**Newsletter Editor:**

Rebecca Lazarus  
University of Maryland

**Website Editor:**

Dan Lavoie  
CH2M Hill

# President's Corner

Dear Fellow CPRC Members,

Spring is upon us and with it another exciting year for our Chapter. It is my great pleasure to serve as President for 2011, and I am looking forward to working with the Board of Directors and Executive Committee to continue growing CPRC and expanding our services to provide the greatest value to the membership. Some of the activities the Board is developing include:

- **Joint CPRC/HDC Spring Meeting:** I think everyone is aware that the 2011 Spring Meeting will be a joint meeting co-hosted by the Hudson-Delaware Chapter (HDC). The theme of the meeting is *Sustainability of Mid-Atlantic Estuaries: Assessment, Restoration and Management of Dynamic Landscapes*. The meeting will be April 27-28 at the Blue Ball Barn, Alapocas Run State Park, in Wilmington, DE. The Planning Committee is working hard to develop the agenda, and a call for abstracts will soon be announced.
- **CPRC Sponsorship Program:** Last year we kicked off a successful sponsorship drive to raise funds and promote the organizations that are active in our chapter. We will continue to develop this program and reach out to member organizations in 2011 to maximize our stakeholder relationships and synergy. Additional information regarding the Sponsorship Program can be found on the CPRC website: <http://cprc-setac.com/sponsorships.aspx>
- **Working Committees:** In order to reinforce the Chapter foundation and establish a growth platform for the future, dedicated Working Committees are being proposed. These Committees could be for Membership, Sponsorship, Outreach, etc., and would offer continued 'service lines' for the Chapter that would be maintained and further developed by successive Boards. Additionally, these Committees would be comprised of Board members and Chapter members to tap the creativity and energy of our membership and give members who would like to be more active in the Chapter, but lack the time to serve on the Board, the opportunity to get involved.

## President's Corner – continued

- **Mission Statement:** Based on input from the Chapter membership, it was agreed the development of a CPRC Mission Statement would be valuable in charting the direction the Board steers the Chapter and assisting in prioritizing resources. The Mission Statement is in the process of being developed and input from Chapter members is welcomed and encouraged to ensure we are able to capture the spirit of CPRC.
- **Meetings/Events:** In addition to our Spring Meeting, the Board is considering other opportunities for the Chapter to convene. Some of the ideas include: short courses, workshops, science fairs, regional happy hours, etc. As these events take shape, we will be reaching out to the Chapter with information. In the meantime, I would love to hear thoughts from the membership regarding potential events and venues.

CPRC has a dedicated and energetic Board of Directors who is committed to making our Chapter an example for other SETAC Regional Chapters. CPRC is *our* Chapter and, even with a strong Board, it is only with the involvement of all our members that we can really grow and create an organization that serves our needs and establishes a community of practice. I invite you to contact me with any questions, concerns, or comments, and hope you will take advantage of my appeal and work with me and the Board of Directors to continue growing the CPRC community.

Sincerely,

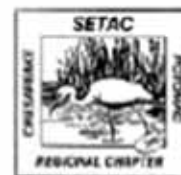


Joseph C. Steinbacher  
[jsteinbacher@versar.com](mailto:jsteinbacher@versar.com)





**Save the Date and Call for Abstracts!**  
 Announcing a Joint Meeting of the  
 Society of Environmental Toxicology and Chemistry  
 Hudson-Delaware and Chesapeake-Potomac Regional Chapters



**Sustainability of Mid-Atlantic Estuaries:  
 The Assessment, Restoration and Management of Dynamic Landscapes**  
 April 27-28, 2011 - Blue Ball Barn, Alapocas Run State Park - Wilmington, DE

In preparation for the annual meeting, HDC and CPRC SETAC are accepting abstracts for platform and poster presentations in the areas of environmental science, toxicology and chemistry that match our session themes of Assessment, Restoration and Management. Platforms will consist of oral presentations scheduled for no more than 30 minutes, including Q&A time. Posters and oral presentations may be submitted as non-competitive or as part of the student competition.

Abstracts must be received no later than March 18, 2011 by Dr. Natalie Karouna at [nkarouna@usgs.gov](mailto:nkarouna@usgs.gov). Please indicate if the abstract is for a poster or oral presentation, and if you are a student.

Agenda for the meeting includes a Wednesday workshop – “Sustainability – What it is, why it is important, and how to think about it.” The course will be taught by Ronald J. McCormick, Ph.D. and Cynthia Stahl.

Other highlights include an evening dinner with experimental archaeologist, Dominique Görlitz, leader of the Abora 4 expedition. Dominique is coming to the US to share his research and vision of history, and to screen his new film *Dare to Voyage* which chronicles the Abora projects.

On Thursday Richard J. Wenning, Editor-in-Chief of SETAC's Journal IEAM, will give a talk focused on how to prepare manuscripts for publication in scientific journals. Rick will also provide an update on the various SETAC journals. Expect oral presentations by HDC and CPRC SETAC members and others on a variety of topics, a poster session and a final student poster competition.

We look forward to seeing you! If you have any questions about the meeting, please feel free to contact any of the meeting co-chairs Tim Iannuzzi, Don Nazario or Joe Steinbacher.

**Tim Iannuzzi**  
 ARCADIS, Inc.  
 (410) 295-1205, Ext. 13 (phone)  
[Tim.Iannuzzi@arcadis-us.com](mailto:Tim.Iannuzzi@arcadis-us.com)

**Don Nazario**  
 Aqua Survey, Inc.  
 (908) 788-8700 (phone)  
[Nazario@aquasurvey.com](mailto:Nazario@aquasurvey.com)

**Joe Steinbacher**  
 Versar, Inc.  
 (410) 366-2518 (phone)  
[jsteinbacher@versar.com](mailto:jsteinbacher@versar.com)



Society of Environmental Toxicology and Chemistry  
Hudson-Delaware and Chesapeake-Potomac  
Regional Chapters

**Sustainability of Mid-Atlantic Estuaries:  
The Assessment, Restoration and Management of Dynamic  
Landscapes**

April 27-28, 2011 - Blue Ball Barn, Alapocas Run State Park -  
Wilmington, DE



### **2011 STUDENT PLATFORM AND POSTER COMPETITION**

The Chesapeake-Potomac Regional Chapter (CPRC) of the Society of Environmental Toxicology and Chemistry (SETAC) is pleased to once again sponsor student research awards. This year the competition continues with up to nine awards, with awards for graduate and undergraduate presentations. The purpose of these awards is to recognize outstanding young scholars and to encourage active participation in SETAC and the CPRC. Up to nine cash prizes are offered:

| <b>2011 STUDENT COMPETITION AWARDS</b> |          |        |
|--|----------|--------|
|  | Platform | Poster |
| Graduate 1 <sup>st</sup> place         | \$400    | \$400  |
| Graduate 2 <sup>nd</sup> place         | \$200    | \$200  |
| Graduate 3 <sup>rd</sup> place         | \$100    | \$100  |
| Undergraduate 1 <sup>st</sup> place    | NA       | \$300  |
| Undergraduate 2 <sup>nd</sup> place    | NA       | \$150  |
| Undergraduate 3 <sup>rd</sup> place    | NA       | \$75   |

Prizes will be awarded at the close of the meeting on Thursday and will be based on reviews performed by unbiased HDC/CPRC SETAC members during the meeting. The HDC/CPRC Board of Directors will also review platforms and poster presentations reserving the right, based on scientific merit, to reject any and all materials submitted.

#### Eligibility:

- All students must be currently enrolled in an environmental toxicology or chemistry-related undergraduate or graduate program with the following exception: those within one year of graduation may also compete, if the work being evaluated was completed while a student.
- Students and/or their faculty advisors must be HDC or CPRC members, or must apply for membership at the time of the award application. The academic program must be located in the general HDC/CPRC area (NY/NJ/PA/DE) or (DE/MD/VA/WV).
- To be considered for any award, research relevant to environmental toxicology and chemistry must be presented at the annual meeting. In

Society of Environmental Toxicology and Chemistry  
Hudson-Delaware and Chesapeake-Potomac  
Regional Chapters

advance of the meeting, a 250-word abstract must be submitted for inclusion in the poster program listing.

- Posters should be displayed throughout the 2-day meeting and remain on display through final judging early Thursday afternoon. Recognizing that this may not be possible for one-day attendees, the posters must be displayed (at a minimum) either all day Wednesday or from 8:00 am through completion of judging on Thursday. Student must be available to discuss the poster during a poster session.
- Platform presentations must be performed by the student at the scheduled time.

To apply for the award, students must submit the following:

- A letter of application from the student if not accompanied by a faculty member, including a statement from the major advisor identifying the research presented is predominantly that of the student.
- For all awards, a 250-word or less abstract
- The student's campus and permanent address, phone number, and email address. The major advisor's name, address, phone number, and e-mail address. The student's current enrollment (institution, department degree program, and expected date of completion)

We look forward to seeing you!

If you have any questions about the meeting, please feel free to contact any of the meeting co-chairs: Tim Iannuzzi, Don Nazario or Joe Steinbacher.

|   |   |  |
|---|---|--|
| <b>Tim Iannuzzi</b><br>Arcadis, Inc.<br>(410) 295-1205, Ext. 13 (phone)<br><a href="mailto:Tim.Iannuzzi@arcadis-us.com">Tim.Iannuzzi@arcadis-us.com</a> | <b>Don Nazario</b><br>Aqua Survey, Inc.<br>(908) 788-8700 (phone)<br><a href="mailto:Nazario@aquasurvey.com">Nazario@aquasurvey.com</a> | <b>Joe Steinbacher</b><br>Versar, Inc.<br>(410) 366-2518 (phone)<br><a href="mailto:jsteinbacher@versar.com">jsteinbacher@versar.com</a> |
|---|---|--|

## The Natural Resource Advisor Program: An Innovative Approach to Protect Natural and Cultural Resources during the Deepwater Horizon Oil Spill Response

**By: Lawrence Malizzi**

Matrix New World Engineers, Inc.

During the Deepwater Horizon (MC252) oil spill response it became apparent that there was a need for an innovative approach to protect natural and cultural resources during the removal of oil from the affected shorelines of Louisiana, Mississippi, Alabama, and Florida. Many of the shoreline cleanup activities had the potential to cause inadvertent, but significant impacts to natural and cultural resources. As part of an emergency section 7 consultation, the USFWS developed a list of Best Management Practices (BMPs) to be implemented to minimize the impacts to federally listed species, designated critical habitat, and candidate species. Additional BMPs were developed to aid compliance with U.S. Army Corps of Engineers permits and conditions required by state natural and cultural resource agencies. The Deepwater Horizon SCAT group integrated these BMPs into their Shoreline Treatment Recommendations but, due to the size of the response area (>1000 miles), it was difficult for the SCAT teams to ensure BMP compliance throughout the entire response while fulfilling their primary duties. Thus, the Mobile Unified Command, in close coordination with SCAT, USFWS and the NPS, developed an innovative approach, the **Natural Resource Advisor** (NRA) program, to oversee compliance with agency BMPs and assist operations crews in minimizing potential injury to natural and cultural resources. This effort was lead primarily by Lyle Trumbull, Ph.D., a Technical Director at Obrien & Gere. The NRA program was comprised of 100 professional biologists distributed throughout the response area and imbedded within the field operations crews.

From June, and currently ongoing, NRA Team Leaders attended daily operations planning meetings and offered suggestions to maximize cleanup efficiency while minimizing resource impacts. NRAs delineated sensitive natural and cultural resources, directed cleanup crews and mechanized equipment away from these areas, and advised field operations on the least intrusive locations for staging and ingress/egress to the beach. Cleanup activities in sensitive habitats (wetlands, dunes, bird and turtle nesting areas, etc.) were continuously monitored. Where state or federal authorization was required, the NRAs took the lead in gathering the required permitting information. The NRA program was extremely successful and achieved the primary program goal of assisting field operations personnel with BMP compliance. It provided state and federal agency personnel with a single point of accountability for natural and cultural resource issues, collected data for the section 7 administrative record, reduced NRDA liability, and, most importantly, minimized impacts to the Gulf of Mexico shoreline during this historic response.



NRAs meeting with USFWS on Cat Island, MS



NRAs staking out dune buffer in Pensacola, FL

# Special Thanks to our current Sustaining Sponsors!



## Associate Sponsor





**Engineering and Construction**  
**Environmental Services**  
**National Security**  
**Professional Services**  
**Telecommunications**

Versar is a global project management company providing sustainable solutions to government and commercial clients in construction management, environmental services, munitions response, telecommunications and energy.

Versar provides tailored and secure solutions in harsh environments and offers specialized abilities in rapid response, classified projects, and hazardous material management.

Our unwavering commitment to quality, safety and best value ensures the highest returns for our clients, shareholders and employees.



**Versar Corporate Headquarters**  
6850 Versar Center Springfield, VA 22151  
703.750.3000  
[www.versar.com](http://www.versar.com)



## Delivering integrated approaches to ecosystems management



As a global leader in environmental analysis, engineering, construction, and operations, CH2M HILL is uniquely positioned to integrate a full array of services for our clients including:

- Ecological risk assessment and management
- Net environmental benefit analysis (NEBA)
- Ecosystem restoration
- Natural resource and asset management
- Environmental documentation

[ch2mhill.com](http://ch2mhill.com)



Integral Consulting Inc. is a national science and engineering firm providing multidisciplinary services in the fields of health, environment, technology, and sustainability.



We are currently seeking highly motivated individuals for the following positions to support our growing environmental practice:

- [Toxicologist/Public Health Scientist in Annapolis, MD; Boston, MA; and Portland, ME](#)
- [Senior Ecological Risk Assessor in Annapolis, MD](#)
- [Environmental Engineer/Scientist in Boston, MA](#)



### Why work for Integral?

#### Technically Stimulating

Every day, our staff is involved in a diverse range of projects for a variety of clients—applying skills and making recommendations that lead to positive change.

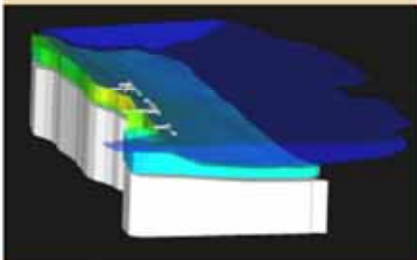
#### Unique Collaboration

The Integral name reflects our very purpose: To gather teams of professionals with distinctly different yet complementary skills, and to apply their integrated knowledge and perspective in ways that surpass our clients' expectations.

#### Supportive Environment

Outstanding benefits include company-subsidized medical, dental, and vision plans, company-paid life and short- and long-term disability insurance, a 401(k) plan and company match, flexible spending accounts (cafeteria plan), health club reimbursement of \$20 per month, and vacation/sick leave.

For more information, please visit our web site at [www.integral-corp.com/careers](http://www.integral-corp.com/careers)



Health ■ Environment ■ Technology ■ Sustainability

[www.integral-corp.com](http://www.integral-corp.com)



## *Creating Value ...*

Sustainable solutions for today's environmental challenges require broad expertise, practical experience, and prudent application of technology. Baker's environmental professionals combine these crucial aspects to help clients meet their challenges and succeed.



## *... Delivering Solutions*

Environmental Engineering, Investigation and Restoration • Permitting & NEPA Support • Program Management  
Risk Assessment • Site Assessment • Site Remediation • Multi-Media Compliance • Cultural Resources

*Creating value by delivering  
innovative and sustainable solutions  
for infrastructure and the environment.*

**Baker**

For more information, contact John Mentz, Vice President, Environmental Services  
757.631.5417 or [jmentz@mbakercorp.com](mailto:jmentz@mbakercorp.com)

1.800.553.1153 • [www.mbakercorp.com](http://www.mbakercorp.com)



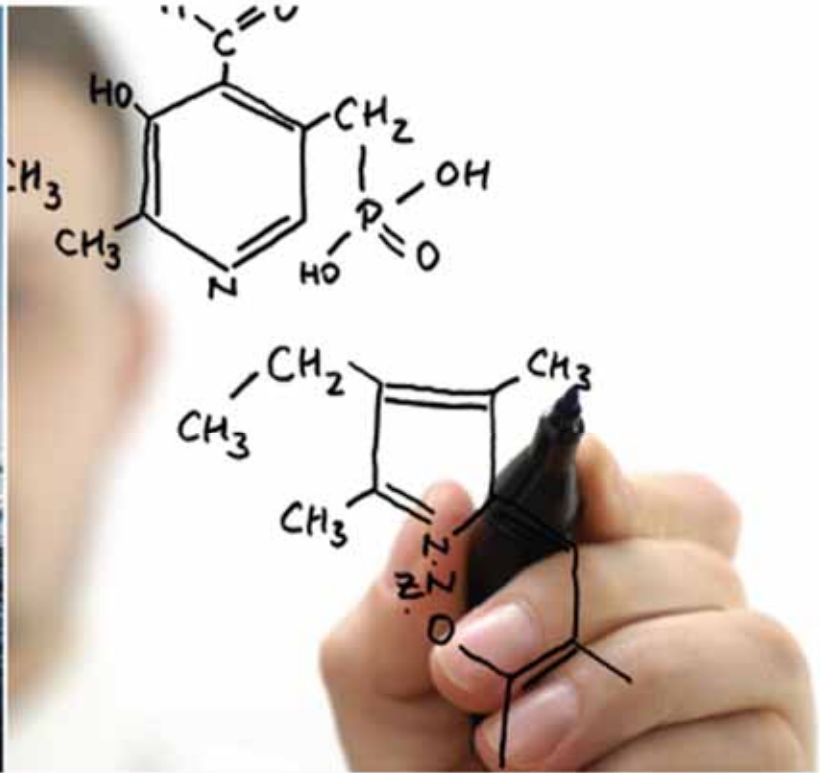
Towson University offers a graduate degree in Environmental Science that is an interdisciplinary program focused on environmental issues and problems faced by metropolitan areas. The program offers both a thesis and non-thesis track with courses offered in the late-afternoon and evening. Graduate assistantships are available for thesis track students. Research opportunities are available with faculty working in the Urban Environmental Biogeochemistry Laboratory as well as the departments of chemistry, biology, geology and geography.

For more information visit our website at:

[http://www.towson.edu/ess/grad\\_programs.asp](http://www.towson.edu/ess/grad_programs.asp)



**UEBL**  
URBAN ENVIRONMENTAL BIOGEOCHEMISTRY LABORATORY



Focused on our clients' most visible challenges.

- Ecosystem Sciences & Restoration
- Ecological Risk Assessment
- Human Health Risk Assessment
- Product Registration and Development
- Natural Resource Damage Assessment
- Contaminated Sediment Management
- Sustainability Solutions

[www.arcadis-us.com](http://www.arcadis-us.com)

- More than 15,000 employees in more than 300 offices worldwide.
- More than 3,500 U.S.-based scientists and engineers.
- Providing innovative approaches to the most challenging scientific problems.

Imagine the result





## Chesapeake and Potomac Regional Chapter Society of Environmental Toxicology and Chemistry



March 1, 2011

Dear Friend and Colleague,

On behalf of the membership and the Board of Directors of the Chesapeake/Potomac Regional Chapter (CPRC) of the Society of Environmental Toxicology and Chemistry (SETAC), I am asking for your support as a Corporate/Organizational Sponsor of CPRC. The benefits of our Chapter are substantial, and include (but are not limited to): fostering interaction among our members (both professionally and socially), sponsorship of scientific meetings and social events each year, development of a biannual newsletter, maintenance and updating of our website, and sponsorship of student awards that encourage and promote the research and professional development of our student members. Your support would play a key role in maintaining these activities, and towards our goal of expanding the size of CPRC and the range of benefits that we can offer.

We offer two formal levels of Sponsorship for CPRC for 2011—Sustaining and Associate. The Sponsorship categories, and the benefits your company or organization will gain as a Corporate/Organizational Sponsor, are summarized below. In addition to these formal categories of sponsorship, we recognize and welcome sponsorships that may be focused on specific areas (for example, a specific student travel award), or just smaller level contributions.

### 2011 ANNUAL CPRC CORPORATE SPONSORSHIP CATEGORIES

**Sustaining (\$500 or more)**

**Associate (\$250)**

Benefits of Corporate/Organizational Sponsorship:

#### **Acknowledgement**

Corporate/Organizational Sponsors are acknowledged in each CPRC newsletter and on our website with a formal "thank you", as well as the names and company/organizational logos listed by sponsorship level. Sponsors are also acknowledged at each CPRC meeting and event.

#### **Advertising**

Sustaining and Associate Sponsors may submit advertising for their organization (i.e., for services and products) for inclusion in our newsletter at no charge. Sustaining/Associate Sponsors may also utilize table space or other dedicated areas for display of corporate/organizational promotional literature at all CPRC meetings and events.

#### **Job Postings**

Sustaining and Full Corporate Sponsors may submit job postings for inclusion in the CPRC Newsletter and on our website.

Please contact any member of the CPRC Board of Directors if you have questions. New and Renewing Corporate/Organizational Sponsors are encouraged to contact Chapter Treasurer Tom Purcell ([tpurcell43@gmail.com](mailto:tpurcell43@gmail.com)) or Chapter President Joe Steinbacher ([jsteinbacher@versar.com](mailto:jsteinbacher@versar.com)).

Your sponsorship is very important to the continued success of our chapter. **THANK YOU!**

# Meet the Officers & Board of CPRC

## Joe Steinbacher – President

Joe Steinbacher is a Regional Manager at Versar, Inc. where he supports a variety of environmental programs for numerous government agencies and provides technical and strategic guidance to government and commercial clients around the world. Prior to joining Versar, Joe worked for the National Oceanic and Atmospheric Administration (NOAA), where he managed Natural Resource Damage Assessment (NRDA) cases at some of the largest oil spills and Superfund Sites in the country. For his efforts, he was awarded the Department of Commerce Bronze Medal and the United States Coast Guard Meritorious Team Commendation. Joe is a Leadership in Energy and Environmental Design Accredited Professional (LEED AP) and certified by the Project Management Institute as a Project Management Professional (PMP). He is an authority in the areas of low-impact development, natural resource liability, environmental stewardship and sustainable development. Joe is a decorated veteran of the Gulf War and served in Operations Desert Shield and Desert Storm. He has been active in SETAC and CPRC for more than a decade. Joe has a B.A. in Biology from St. Mary's College of Maryland, and M.S. in Environmental Chemistry from the University of Maryland, and an MBA in Strategic Management from Loyola University.



## Larry Malizzi – Vice President

Mr. Malizzi has 21 years of experience in spill response, geology, hydrogeology, due diligence, remediation, and Natural Resource Damage Assessment (NRDA). He is currently Program Manager for the Natural Resource Advisor Program in support of the MC252 Gulf Spill Response. Mr. Malizzi has responsibility for the Matrix Spill Response Practice, the Mobile, Alabama and Wilmington, Delaware offices, and private sector business development. Mr. Malizzi has managed projects involving spill response, major due diligence portfolios, groundwater and soil remediation, hazardous and solid waste management, and NRDA. He has extensive experience providing these services to the insurance, automotive, oil and gas, and financial sectors. In addition, he has managed staff, had P/L responsibility for multiple offices, written numerous technical reports, testified at environmental hearing boards, participated in many public meetings, and published technical papers. He has set up and managed alliances with other consulting firms in the US, Canada, and the United Kingdom. Mr. Malizzi has also travelled extensively and lived abroad as part of his responsibilities. He has a B.S. in Geoscience from Montclair State College, and an M.S. in Geology from Rutgers University.

## Tom Purcell – Treasurer

Tom Purcell retired from his role as Science Advisor at API (American Petroleum Institute) at the end of 2009. While there he dealt with issues pertaining to Whole Effluent Toxicity testing, Mercury and Selenium water quality criteria, water permitting for oil and gas exploration and production in the Gulf of Mexico, and effects of produced water. He also worked on issues related to specific RCRA materials in petroleum industry solid and hazardous wastes and had responsibility for research and policy aspects relative to prevention and mitigation of oil spills in the Continental United States. He had been the Senior V.P., Science, for The Silver Council from 1996 until 2000 where he coordinated scientific research and information transfer related to effects of silver-bearing photographic materials in the environment, and was co-author of the introductory chapter in SETAC publication, "Silver in the Environment." Earlier Dr. Purcell was Director of Environmental Programs for Printing Industries of America (1989 - 1995) and an Environmental Scientist for U.S. EPA in the Office of Water (1985 - 1989). He has been a peer reviewer for the Journal, Bulletin of Environmental Contamination and Toxicology. He received a Ph.D. from the University of Maryland, College Park, Marine-Estuarine Environmental Science (MEES) program, an M.S. in biology from Old Dominion University, Norfolk, VA and a B.S. in Biology from Florida Atlantic University, Boca Raton, FL. He is married with two daughters, and recently the family adopted a new dog, Rosie.



# Meet the Officers & Board of CPRC

## Dan Lavoie – Secretary

Dan is currently an environmental consultant at CH2M HILL, where he has worked for 10 years on ecosystems projects. He has been an active SETAC-North America (NA) member since 1996 and a member of SETAC-CPRC since 2003 (when he moved to DC from the Ohio Valley Chapter member). He was elected to the CPRC Board in 2007 and became Secretary in 2009. He is also the Chair of SETAC-NA's Awards and Fellowship Committee. Dan received his Master's Degree in biology from Wright State University in Dayton, Ohio where he specialized in aquatic ecology, sediment ecotoxicology and development and application of in situ biomonitoring methods. At CH2M Hill, Dan is responsible for leading ecosystems projects for a variety of clients (e.g., DoD, Industrial, USEPA) and environmental issues. His particular focus is on ecological risk assessment, especially for sediment projects, but is also responsible for remediation strategy, planning and execution of field sampling plans, and client advocacy via participation in partnerships with State and Federal regulators. He enjoys participation in the national and regional SETAC meetings and tries to help increase membership communication/participation through CPRC website updates and email communications and enjoys helping the Board to develop ideas and plans for meetings and networking sessions for the regional membership. Dan lives in DC with his wife Emma (also an active SETAC member who works at USEPA), his 5 year old son Luca and 1 year old daughter Nina.



## Todd Stueckle – Board

My primary research interests focus on how organic contaminants, either as single or multiple stressor exposures, impact marine animal physiological and endocrine function. I currently possess 11 years of marine science research experience including work performed in Iceland, Baja California, Woods Hole Oceanographic Institution and Chesapeake Bay salt marshes. Recently, my post-doctoral studies have switched focus to human lung cancer, involving both chronic heavy metal-induced cancer and anti-cancer drug development. My current research at NIOSH focuses on carbon nanotube lung toxicology and their carcinogenic potential. On a more personal note, my wife and I just welcomed our second son into the world! His big brother has jumped into his role well and wants to help with everything, well, except those diapers. As a 6+ year member of CPRC, I have greatly benefited from this chapter's commitment to students and young career researchers in facilitating research, networking, job offers and travel support (\$\$) to the national SETAC meeting. CPRC is continuing to find new ways to boost membership, sponsorship, and student involvement and support. Our CPRC Board is excited for the networking and educational opportunities that the Joint 2011 Spring Meeting holds.

# Meet the Officers & Board of CPRC

## Natalie Karouna-Renier – Board

Natalie Karouna-Renier is a Research Ecologist in the Contaminants Group at the U.S. Geological Survey Patuxent Wildlife Research Center, in Beltsville, MD. Natalie is the leader of the Molecular Toxicology Laboratory and her primary research interests are directed towards understanding the effects of chemical and non-chemical stressors on wildlife and fish at the molecular level. Natalie has over 15 years of research experience including work at the University of West Florida, Tokyo University of Pharmacy and Life Sciences, the USGS New York Water Science Center, and the U.S. Fish and Wildlife Service Patuxent Wildlife Research Center. Her current research focuses on the development and application of novel molecular and non-molecular techniques for assessing the effects of contaminants on various wildlife and fish species. Natalie has been a member of CPRC for 3 years and SETAC for over 12 years. Her initial exposure to the society as a student helped guide her academic and career choices and she has over the years benefited greatly from guidance, mentorship and support of many current and former members of CPRC. Natalie holds a Ph.D. in Biology from Rensselaer Polytechnic Institute, Troy, NY, a M.S. in Toxicology from the University of Maryland, and a B.S. in Biology from Colgate University, Hamilton, NY.



## Nazmul Haque – Board

Nazmul has been working as an Environmental Engineer in Kleinfelder at Hanover, MD since July 2008. He received his Ph.D in Environmental Science & Engineering from the University of Texas at El Paso in 2008, M.Sc in Environmental Engineering from the Chalmers University of Technology, Sweden in 2003, and B.Sc in Civil Engineering from Bangladesh in 1999. He worked 3 years as a Civil Engineer in Bangladesh; 2 years as a Research Engineer in Chalmers University, Sweden; 1 year as a Visiting Scientist in the Universidad de Guanajuato, Mexico; and 1.5 years as an Environmental Scientist in Phelps Dodge Miami Inc, Arizona. His current job duties include but not limited to conducting subsurface investigation, completing risk assessments (Tier 1 and Tier 2), remediation system design using in-situ bioremediation, chemical oxidation/reduction, phytoremediation, feasibility or pilot testing of the recommended remediation system (s), preparation of corrective action plan, permit applications, and reporting. In his previous work, he focused on Environmental Toxicity and Site Assessment, Environmental Remediation, Risk Based Corrective Action, Engineering Design & Planning, Quality Control, and Data Analysis. He has published 12 scientific papers and presented his research at 26 national & conferences. He is a member of International Phyto Society, SETAC, and American Society of Mining and Reclamation (ASMR). He received many national and international honors and awards including the Best Mining Research in entire North-America in 2008 from ASMR and Award of Excellence for Platform from SETAC, South Central Region Chapter in 2006. His interest is to achieve a healthy and sustainable environment for our future generations using his knowledge and experiences. However, cooperation from all directions would be the key to achieve that goal.



# Meet the Officers & Board of CPRC

## Heather Govenor – Board

Heather is an Environmental Specialist with Michael Baker Corporation with twelve years of environmental consulting experience. She specializes in all aspects of screening-level and baseline ecological risk assessment, including study design; field media sampling; in-field analytical testing; data management, analysis, and interpretation; and report preparation. Heather has been a member of SETAC since 2005 and has served on the Board of Directors for CPRC since 2009. She has a B.S. from Penn State University in Biology and an M.S. in Entomology from Michigan State University.



## Melissa Grable – Board

Melissa Grable is a biologist with the U.S. Environmental Protection Agency (EPA). Her focus is on endangered species issues for the Office of Pesticide Programs (OPP) in the Environmental Fate and Effects Division (EFED) and is based in Arlington, VA. She has worked for the EPA for three years, entering the agency through the EPA Intern Program (EIP). As part of the EIP, she performed rotations in the following offices: the U.S. Fish and Wildlife Service's Chesapeake Bay Field Office (Annapolis, MD); the Great Lakes National Program Office (GLNPO) in EPA's Region 5 (Chicago, IL); the EPA's Office of Water (Washington, DC); and the EPA's Office of International Affairs (Washington, DC). Before joining the EPA, Ms. Grable worked for six years as a contractor to the EPA at the New England Regional Laboratory outside Boston (Chelmsford, MA). She holds a Bachelor of Science from Bates College (Lewiston, ME) and a Master of Arts from the Boston University Marine Program (Woods Hole, MA). She serves on the SETAC-CPRC board to gain a better understanding of both SETAC and the Chesapeake Potomac Regional Chapter, as well as to pursue her interest in environmental issues.

## Rebecca Lazarus – Student Representative

I am a second year graduate student in the Marine-Estuarine Environmental Sciences Graduate Program at the University of Maryland, College Park, and am co-advised by Drs. Barnett Rattner and Mary Ann Ottinger. Currently, I am working at the Patuxent Wildlife Research Center in Beltsville, MD on a SCEP appointment. My research interests include wildlife ecotoxicology and ornithology. I will be pursuing research on exposure and potential adverse effects of contaminants on ospreys, and am involved in projects investigating the estimation of PBDE toxicity thresholds in common terns, and the toxicity of the rodenticide diphacinone on Eastern screech-owls. In 2009, I completed my B.S. in Biology at Penn State University, and spent time studying raptor conservation and ornithology at Hawk Mountain Sanctuary in PA and Shoals Marine Lab in the Gulf of Maine. My hobbies include birding, horseback riding and volunteering. As a second year Ph.D. student, being of the larger scientific community that SETAC offers, has already begun to play a valuable role in my education and professional development.



## THIS YEAR'S ARRIVAL OF OSPREYS TO THE CHESAPEAKE BAY WILL PROVIDE VALUABLE INFORMATION ON CONTAMINANT EXPOSURE & EFFECTS

By: **Rebecca Lazarus & Barnett Rattner** (USGS-Patuxent Wildlife Research Center)

Just as the ospreys (*Pandion haliaetus*) return every year to the Chesapeake Bay, scientists will once again be climbing up into their conspicuous nests to study them. The osprey, known to many as the charismatic "fish-hawk", is well recognized for its utility as a sentinel species to monitor contaminants on spatial and temporal scales worldwide. Osprey are strictly piscivorous and feed at a high trophic level (perhaps the highest), and eggs and nestling blood samples are known to be an indicator of local pollution. Nestlings are exclusively fed fish usually captured near the nest. These raptors are highly adaptable to human landscapes and can be found in some of the most highly polluted and industrialized areas of the Bay. This year the first ospreys returning to their nesting grounds were spotted on March 1.

The last large-scale ecotoxicological study on Chesapeake Bay osprey was conducted in 2000-2001, and focused on the US EPA identified Regions of Concern (ROCs): Baltimore Harbor, and the Elizabeth and Anacostia Rivers. Organochlorine pesticides were found to be decreasing in osprey eggs. However, levels of PCBs had not declined from historic values and remained a concern in some locations. A few eggs contained concentrations of PBDEs that approached suggested adverse effect thresholds.

For the next two years, scientists from USGS, USFWS, University of Maryland, the College of William & Mary, and Baylor University hope to conduct a decadal re-evaluation of organochlorine pesticides, PCBs and PBDEs in osprey eggs in Chesapeake Bay ROCs. In addition, ospreys nesting on the James, Susquehanna, middle Potomac and Back Rivers will also be studied. In the past 10 years, ecotoxicological studies on terrestrial vertebrates in the Chesapeake have been limited. Another component of this study will investigate food-chain transfer of both legacy and emerging contaminants, including a suite of pharmaceuticals that have been detected in fish tissue across the U.S. Osprey nestling blood samples will be collected to evaluate potential adverse health effects.



Osprey on nest at Poplar Island, Chesapeake Bay



Osprey nest on channel marker in Baltimore Harbor

# The Student Pages

## Student Art Contest Bridges Interests – By Barbara Beckingham

For the second year, the North American Student Advisory Council (NASAC) challenged student members of SETAC to express their views on science and this year's theme for the 31<sup>st</sup> Annual SETAC North America Meeting – Bridging Science and Communities – in a creative work of art. Winners were announced and artwork displayed at the NASAC/Student Activities Council booth in Portland. We look forward to hosting the competition again next year, so sharpen your pencils and artistic eye for the 2011 meeting in Boston!

***NASAC would like to hear your ideas for an theme for this year's contest!. If you have an idea please send it to Ashley Jessick ([ashleyjessick@gmail.com](mailto:ashleyjessick@gmail.com)) by April 15<sup>th</sup>, 2011. All submissions must include the word "NAVIGATION" (or variation) in the theme.***



**1<sup>st</sup> place** \$75 prize: Brad Glenn,  
Clemson University

The winning submission by Brad Glenn was a photograph taken in a botanical garden of a meditation waterfall on a channel which has a secondary function – water diversion and erosion control. The second prize winner, Xianming Zhang, submitted a photograph of the dramatic architecture of the art museum she visited while attending the 29<sup>th</sup> Annual SETAC North America meeting in Milwaukee, WI. Xianming noted that it was interesting to explore the social community of Milwaukee while there to engage with the scientific community.



**2<sup>nd</sup> place** \$50 prize: Xianming Zhang, University  
of Toronto

# The Student Pages-Cont

## CPRC-2010 Student travel award recipient *Barbara beckingham*

There is a lot to experience as a student member of CPRC. Beyond the opportunity of networking with area students and professionals, involvement in the chapter can take you places. Figuratively, the connections you make, things you learn about different career paths, and chance to practice communicating your research, all can make a mark on your future. Literally, the generous travel grants provided to students to attend SETAC North America meetings help put you in motion. I'm thankful for the experiences I've had as student member of CPRC for the past three years, and for the assistance I've received to travel to present my research and meet interesting people at three different national meetings. (And all the fun, memorable experiences that went along with it... a crowded pub crawl and museum visit along the shores of Lake Michigan in Milwaukee, a second line parade in New Orleans, and a SETAC-led trip to Mount St. Helens outside Portland... the possibilities are endless).



Barbara at Mt St Helens, Nov 2010

Thanks again, to CPRC,

Barbara Beckingham

*Barbara is planning to defend her PhD dissertation at the University of Maryland Baltimore County this summer.*

*Thanks Barabara for all of your hard work and we hope you continue to stay involved in SETAC throughout your professional career!*

*"I have been awarded two times SETAC Travel Scholarship to attend the SETAC North America Conferences in Montreal, Canada in November 2006 and Milwaukee, USA in November 2007. When I was eagerly looking for possible funding opportunities to attend these great conferences, SETAC Travel Scholarship was a blessing at that time and fulfilled my Dream".....Nazmul Haque (Current BoD)*

*"Students: I fully encourage you to get involved in your local SETAC Chapter to help expand upon your young scientific career".....Todd Stuckle (Current BoD)*

### BENEFITS OF CPRC STUDENT MEMBERSHIP

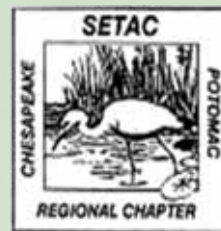
- Reduced membership fee and registration fees at chapter conferences and meetings
- Opportunity to present research at chapter symposia and conferences
- Opportunity to interact with other students, as well as environmental professionals from government, academia, business and public sectors
- Updated news and information on the chapter web site & newsletter
- Opportunity for several student-oriented awards
- Networking opportunities (several students have met their future employers at CPRC meetings)

## Student travel Awards

CPRC views our support of students as the most positive and productive part of our charter. Every fall the chapter grants Student Travel Awards for attendance at the Annual SETAC North America Meeting. The board has approved total funding of \$500 for awards to be divided among a maximum of 4 qualifying students. The amount of the award will be determined based on the number of qualifying students who apply. To qualify for a student award at the upcoming meeting in Boston you must be a current member since August 1, 2011. In addition, you must have an accepted platform or poster presentation and the SETAC-Boston meeting. Don't forget about this great opportunity when preparing for the Boston meeting.

**Stay tuned for more information on our website and in the fall newsletter as the 2011 Boston meeting approaches!!**

## CPRC – WHAT WE DO



1. Sponsor bi-annual Chapter meetings
2. Publish two or more newsletters per year
3. Benefits of membership include:
  - Networking with fellow scientists and regulators in the region
  - Mentoring of young scientists
  - Opportunity to present research in scientific meetings
  - Experience with Society management
  - Opportunity to influence the direction of Chapter activities
4. Sponsor annual student travel awards
  - Travel money directly to students to subsidize costs of attending the annual SETAC NA meeting
5. Additional benefits of student membership
  - Reduced membership fee
  - Reduced registration fees at annual chapter conferences and meetings
  - Opportunity to present research at scientific meetings
  - Opportunity to interact with other students, as well as environmental professionals from government, academia, business and public sectors
  - Updated news and information through the chapter web site or newsletter
  - Opportunity for student-oriented awards
  - Networking opportunities (several students have met their future employers at CPRC meetings)
6. Offer company and institution visibility through sponsorship of CPRC activities or student awards

**Make sure to check out our website  
<http://cprc-setac.com/default.aspx>  
for information about our upcoming  
meeting and the latest news!**



## **ENVIRONMENTAL & TURF SERVICES, INC.**

Stuart Z. Cohen, Ph.D., CGWP

*Providing water quality risk assessment, risk management, monitoring, and expert testimony services, including toxic torts.*

- Regulatory assistance with EPA compliance (FIFRA and TSCA).
  - Computer simulation modeling.
- Focus on pesticides and fertilizers for golf courses and agriculture.
  - Focus on lead and arsenic for shooting ranges.
- Staff expertise in environmental chemistry and toxicology, agronomy, hydrogeology, hydrology, and soil physics.

*www.environmentalandturf.com*

Wheaton, MD

301-933-4700

ets@ets-md.com

### **SETAC North America Meetings for the next four years:**

2011 - SETAC North America 32<sup>nd</sup> Annual Meeting

*Navigating Environmental Challenges: Historical Lessons Guiding Future Directions*

Hynes Convention Center, Boston, MA, USA., 13-17 November 2011

2012 - SETAC North America 33<sup>rd</sup> Annual Meeting

Long Beach, CA, 11-15 November 2012

2013 - SETAC North America 34<sup>th</sup> Annual Meeting

Gaylord Opryland, Nashville, TN, 17-21 November, 2013

2014 - SETAC North America 35<sup>th</sup> Annual Meeting  
Vancouver, British Columbia, 9-13 November, 2014



## EPA Earth Day on the National Mall

**April 16-17, 2011, on the National Mall between 4<sup>th</sup> and 7<sup>th</sup> Streets.  
Open to the public; Saturday 10:00 am – 5:00 pm and  
Sunday, 10:00 am - 3:00 pm.**

*Join EPA under the tent when it hosts over 40 environmental exhibits, the winners of our college student innovative design contest and children's eco-cultural activities.*



The college students, demonstrating their innovative solutions for a sustainable future, will be vying for EPA's coveted People, Prosperity and the Planet (P3) award. Visit these young geniuses and vote for your favorite project to win the "people's choice" award. Join in EPA activities for all ages and learn how you can help protect the air we breathe; the water that flows into our homes and communities; and the land where we build homes, schools, hospitals and businesses.

**Come see the future of environmental protection today!**

[www.epa.gov/earthday](http://www.epa.gov/earthday)

[www.epa.gov/p3](http://www.epa.gov/p3)



**NOW AVAILABLE**

# ACIScience.org

Your online source for ACI's scientific and technical information on the safety and benefits of cleaning products and their ingredients.

**Human Health**  
**Risk Assessment**  
**ENVIRONMENTAL HEALTH**  
**Chemicals Management**

**The American Cleaning Institute®**  
1331 L Street NW, Suite 650 - Washington, DC 20005  
Phone 202-347-2900 - Fax 202-347-4110 - Email [ACIScience@cleaninginstitute.org](mailto:ACIScience@cleaninginstitute.org) - [www.cleaninginstitute.org](http://www.cleaninginstitute.org)  
THE HOME OF THE U.S. CLEANING PRODUCTS INDUSTRY™

## Extra Thoughts

I wondered why the baseball was getting bigger. Then it hit me.

Did you hear about they guy whose whole left side was cut off? He's all right now.

The roundest knight at King Arthur's round table was Sir Curmferance.

The butcher backed up into the meat grinder and got a little behind in his work.

To write with a broken pencil is pointless.

When fish are in schools, they sometimes take debate.

When the smog lifts in Los Angles, U.C.L.A.

The dead batteries were given out free of charge.

A bicycle can't stand alone; it is two tired.

Time flies like an arrow; fruit files like a banana.

A backward poet writes inverse.

## APPLICATION FOR MEMBERSHIP – 2011

**If you are a SETAC NA member, join CPRC by following the Regional Chapters link after your log-in to [www.setac.org](http://www.setac.org)**

**SETAC:** the **Society of Environmental Toxicology and Chemistry** is an independent, nonprofit professional society that provides a forum for individuals and institutions engaged in the study of environmental issues, management and conservation of natural resources, environmental education, and environmental research and development.

**CPRC:** the **Chesapeake and Potomac Regional Chapter** of SETAC is a non-profit organization started in the year 1983. CPRC's mission is to promote the exchange of information among environmental scientists in the Mid-Atlantic States.

Note: you do not have to be a SETAC member to be a member of CPRC.

**Name:** \_\_\_\_\_

**Employed by:** \_\_\_\_\_

**Mailing Address:** \_\_\_\_\_

\_\_\_\_\_

\_\_\_\_\_

**Phone Number:** \_\_\_\_\_ **Fax Number:** \_\_\_\_\_

**Email:** \_\_\_\_\_

**Please Check the Appropriate Membership Class:** Regular \_\_\_ (\$15) Student \_\_\_ (\$5)

**Employment Class:** Academic \_\_\_ Government \_\_\_ Business \_\_\_ Consulting \_\_\_

**Education:**

\_\_\_\_\_

(highest degree, discipline, year)

Please enclose a check made out to CPRC. This form and check should be sent to:

**Tom Purcell**  
**5209 Westpath Way, Bethesda, MD 20816**  
**Email: [tpurcell43@gmail.com](mailto:tpurcell43@gmail.com)**