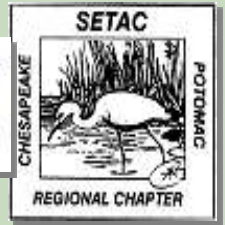




Chesapeake and Potomac Regional Chapter Society of Environmental Toxicology and Chemistry



CPRC NEWS

*A Biannual Newsletter of the
Chesapeake and Potomac Regional Chapter of the
Society of Environmental Toxicology and Chemistry
Vol 19, Number 2, Fall 2011*

In This Issue

	Page
Chapter Leadership	2
President's Corner	3
Spring 2011 Meeting Summary & Student Awards	5
CPRC Social Networking Sites	8
SETAC-NA Boston Meeting	9
Reuse of Treated Effluent for HVAC Application	10
VPharmaCalc Website Gives Public Visibility on Pharmaceuticals Entering Local WWTPs	11
Current Sponsors	12
Corporate Sponsorship Letter	13
The Student Pages	15
Visible Pollutants in Osprey Nests	19
CPRC Logo Re-Design Contest	20
CPRC What We Do	21
Upcoming Events and Future SETAC Meetings	22
Application for Membership	24

Officers:

President

Joe Steinbacher
O'Brien & Gere

Past President

Judi Durda
Integral Consulting, Inc.

Vice President

Larry Malizzi
Matrix New World Engineering, Inc.

Treasurer

Heather Govenor
Michael Baker Corporation

Secretary

Dan Lavoie
CH2M Hill



Board Members:

Melissa Grable
US Environmental Protection Agency

Tom Purcell

Nazmul Haque
Kleinfelder

Natalie Karouna-Renier
USGS Patuxent Wildlife Research Center

Todd Stueckle
National Institute for Occupational Safety
and Health

Rebecca Lazarus
(Student Representative)
University of Maryland, College Park

Newsletter Editor:

Rebecca Lazarus
University of Maryland

Website Editor:

Dan Lavoie
CH2M Hill

President's Corner

Dear Fellow CPRC Members,

When the 2011 CPRC Board of Directors and Executive Committee began the year, we developed a list of initiatives we hoped would create a sustainable foundation for continued growth of the Chapter. I outlined these initiatives in our Spring Newsletter and expressed my intent to see the efforts through fruition. In this Fall Newsletter, I want to share the accomplishments the Chapter and our Board have made in realizing our objectives, and relay my appreciation for the commitment of everyone who volunteered to engage in these efforts and do their part in furthering the CPRC community. The initiatives and their current status include:

- **Joint CPRC/HDC Spring Meeting:** CPRC's first two-day, joint Spring Meeting was held at the Blue Ball Barn, Alapocas Run State Park, in Wilmington, DE on April 27-28. The meeting was a great success and we enjoyed spending time and sharing interests with the Hudson Delaware Chapter. A separate write-up in this Newsletter describes the meeting in more detail.
- **CPRC Sponsorship Program:** Last year we kicked off a successful sponsorship drive to raise funds and promote the organizations that are active in our Chapter. CPRC received three new Sustaining Sponsors this year, before we started our 2012 sponsorship drive! The 2012 CPRC sponsorship drive is beginning now, and a copy of the sponsorship letter is included in this newsletter. Additional information regarding the sponsorship program can be found on the CPRC website: <http://cprc-setac.com/sponsorships.aspx>
- **Standing Committees:** In order to reinforce the Chapter foundation and establish a growth platform for the future, I proposed the Board form dedicated Standing Committees that will carry over year to year. This year we formed several committees to see to the business and development of the Chapter. These standing committees include: a Newsletter Committee, a Sponsorship Committee, a Planning Committee and a Social Committee. We are in the process of formalizing the roles and responsibilities of each committee and welcome involvement of the Chapter members as we move forward and grow.

President's Corner – continued

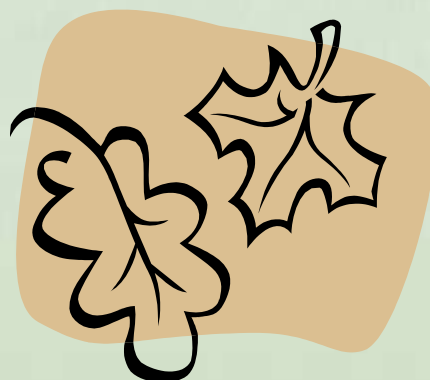
- **Mission Statement:** In order to succinctly capture the reason for the existence of our Chapter and to provide a cornerstone for our continued growth, the Board has been considering the development of a CPRC Mission Statement. The purpose of the mission statement is to embody the philosophies, goals, ambitions and values of our Chapter and enable the leadership to verify a true course for organization and its membership. We want input from the membership and the CPRC Mission Statement will be an agenda item for our Chapter meeting at SETAC NA in November.
- **Meetings/Events:** Following the success of our joint CPRC/HDC Spring Meeting, and in the spirit of collaborative learning and development, the CPRC Board is excited to announce another joint meeting for 2012. CPRC is teaming with the Society for Risk Analysis (SRA) National Capital Area Chapter (NCAC) to co-host a joint Spring Meeting. The leadership of both Chapters believe there is a great deal of synergy that can be leveraged through this effort and we will be sharing more details about the meeting in the next few months

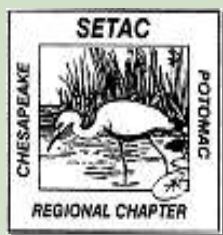
I am pleased with the progress the Board and Executive Committee have made in advancing our Chapter and look forward to continued efforts to see CPRC grow and better serve the needs of our membership. I would love to have the members of our community of practice engage more readily with the Board to contribute thoughts and suggestions on how we can do things better and what the membership might enjoy as a benefit of belonging to this organization. I hope to hear from you and encourage you to engage in our Chapter and take advantage of the many opportunities and offerings our organization and its members provide.

Sincerely,



Joseph C. Steinbacher
joseph.steinbacher@obg.com





CPRC/HDC 2011 Spring Meeting Summary



By: Joseph C. Steinbacher – CPRC President
joseph.steinbacher@obg.com

After several years and many discussions, the SETAC Chesapeake – Potomac Regional Chapter (CPRC) and the Hudson – Delaware Chapter (HDC) collaborated to co-host a joint spring meeting for 2011. The theme of the meeting was *Sustainability of Mid-Atlantic Estuaries: The Assessment, Restoration and Management of Dynamic Landscapes*.

The first challenge the planning committee faced was determining a suitable location to accommodate the geographic range of the chapters' membership. We settled on Wilmington, DE and found a fantastic venue at the Blue Ball Barn in the Alapocas Run State Park¹. The location was convenient for attendees, who traveled from as far away as Virginia and Connecticut, and the Barn provided the perfect setting for the meeting.

The meeting was two-days long, a first for CPRC, and session topics were varied and included presentations on: sea level rise, risk assessment, stormwater management, emerging contaminants, bioremediation and many others. Several workshops were offered at the spring meeting and included: Sustainability – What it is, why it is important and how to think about it; Nanotechnology and the Environment; and Considerations for Spatially-Weighted Risk Assessments.

CPRC/HDC 2011 Spring Meeting Summary - Continued

We were fortunate to have Dominique Görlitz, an experimental archaeologist and leader of the Abora 4 Expedition², as our dinner speaker. Dominique shared his interest in the natural world and expressed his enthusiasm for scientific discovery during his presentation. He also provided the audience with interesting anecdotes and video footage from his expeditions.

The meeting was a great success for both chapters and it was an excellent opportunity to meet and network with members of our neighboring SETAC regional chapter. Overall, there were 75 attendees, with 32 attendees from HDC and 43 attendees from CPRC. We were fortunate to have a good turnout of student members and gave away over \$1,000 in awards for best platform and poster presentations.

Given the success of CPRC's first joint meeting and the potential synergies generated through such a collaborative venture, CPRC is in the process of planning another joint spring meeting in 2012 with the Society for Risk Analysis (SRA) National Capital Area Chapter (NCAC)³. We hope you will mark your calendars and plan to participate in what will be another exciting and informative conference.



¹<http://www.destateparks.com/park/alapocas-run/blue-ball-barn.asp>

²<http://www.abora3.com/>

³<http://www.sra.org/ncac/>

Student Poster and Presentation Award Winners - Spring 2011 Meeting

Graduate Platform

1st Place-\$ 400: Anne Doherty (Stony Brook University)
Quaternary ammonium compounds (QACs) as tracers of sewage-derived input to
Hempstead Bay, NY

2nd Place - \$200: Marcia Anderson (Montclair State University)
Long term mosquito vector management plan for Haiti

Graduate Poster

1st Place- \$ 400: Robert Newby (Seton Hall University)
Physiological responses of freshwater *Cyanobacterium Synechococcus* sp. IU
625 to zinc chloride

2nd Place- \$200: Rebecca Hawke (Seton Hall University)
Bile PAH determination on *Brevoortia tyrannus* and *Brevoortia patronus* using
synchronous fluorescence spectrophotometry (SFS)

3rd Place- \$100: Kristina Early (West Chester State University of PA)
An exploration of spatial analysis and decision assistance (SADA) software and
its support in human health risk assessments, decision-making, and risk
communication

Undergraduate Poster

1st Place - \$300: Meagan Mazzei (Towson University)
Developing a copper isotope ratio method for estimating copper
availability to *Eisenia fetida*

2nd Place - \$150: Kristopher Marsh (Towson University)
Kinetics of Zn accumulation in the isopod *Porcellio scaber*
exposed to contaminated diet

3rd Place- \$70- Julie New (Towson University)
Zinc toxicity and transport in barley

CPRC Social Networking Sites!



<https://www.facebook.com/pages/Chesapeake-and-Potomac-Regional-Chapter-Setac/154275917991446>



http://www.linkedin.com/groups/SETAC-ChesapeakePotomac-Regional-Chapter-4065821?home=&gid=4065821&trk=anet_ug_hm&goback=.gdr_13147179144_00_1.gmp_4065821

CPRC is now on Facebook and Linked In! Be sure to “Like” our Facebook page and join our group page on Linked In to stay up to date on all CPRC-SETAC news and events.

2011 SETAC-NA Boston Meeting

2011 - SETAC North America 32nd Annual Meeting

Navigating Environmental Challenges: Historical Lessons Guiding Future Directions

Hynes Convention Center, Boston, MA, USA., 13-17 November 2011

Make sure to stop by the CPRC Booth in Boston on **Monday November 14 from 3-5 PM** to learn more about our chapter!



CPRC Meeting: **Wednesday November 16 from 3-5 PM in Room 204** – All members and those interested in CPRC are welcome to attend. Student travel awards will be distributed and we will be discussing upcoming activities including:

- Development of a CPRC Mission Statement
- Joint SETAC/SRA spring meeting
- Re-design of the chapter logo
- Formalization of standing committees for future CPRC business
- Member recruitment strategies
- Chapter social activities
- Sponsorship drive

We look forward to seeing you in Boston!

Beneficial Reuse of Treated Effluent for Non-Contact Cooling Water in HVAC Application

By: Ben King, PE, Project Engineer
Matrix New World Engineering Inc.

Since January 2009, Matrix New World Engineering, Inc. (Matrix) has been part of a technical team remediating one of the largest privately funded Superfund sites in the United States. The Site is located in the Phoenix, Arizona metropolitan area. The Site includes an area of contaminated groundwater that encompasses approximately three square miles and originates at the former facility location. The primary site contaminants of concern (COCs) include the chlorinated solvent, trichloroethylene (TCE), and the solid rocket propellant, perchlorate.

As part of the ongoing remedial efforts being overseen by the United States Environmental Protection Agency (USEPA) and to provide hydraulic protection to local city-owned production wells, Matrix on behalf of our client, had recently installed a network of 5 injection wells strategically placed to provide the necessary hydraulic control. An average treated effluent flow of 900-gallons per minute from two existing groundwater extraction wells is distributed to the injection wells, creating a hydraulic mound utilized to reduce the plume and protect the surrounding production wells. As part of this construction project, Matrix worked with a local architectural engineer that had recently designed facility upgrades for a local church and school system to convey approximately 50% of the treated effluent from our groundwater remediation system to a newly installed HVAC system at the church for use as non-contact cooling water. This beneficial reuse project, under the guidance of the USEPA green remediation initiatives programs, provided a constant source of non-potable water for the HVAC system, reducing construction costs associated with new production wells and distribution systems, saved the church thousands of dollars annually in water and maintenance costs, and reduced energy costs by approximately 40%. Matrix provided design support for the conveyance and piping system to the architect and construction oversight support to the general contractor and Church at no cost. The system is currently in use, and Matrix Operation & Maintenance personnel work closely with Church maintenance personnel to ensure the system operates properly and help rebalance the conveyance piping to and from their HVAC system as necessary.



Photo of influent and effluent underground conveyance piping from the treated effluent primary line to the Church HVAC system, providing treated groundwater for use as non-contact cooling water.



Photo of the Church HVAC system under construction, including influent and effluent conveyance piping connecting to the plate and frame heat exchanger.



Newly Developed Website Gives Public Visibility on Prescription Pharmaceuticals Entering Local Wastewater Treatment Plants

By: Karl Ottmar

University of Virginia Department of Civil & Environmental Engineering

Researchers at the University of Virginia recently announced the release of a website providing information on prescription pharmaceuticals entering wastewater treatment plants in Virginia. The website, titled VPharmaCalc, is based on an influent model developed with the purpose of estimating drug concentrations entering a wastewater treatment plant. The website has visitors enter their zip code and then, by using a shortest distance algorithm, matches up that zip code with the nearest wastewater treatment plant. The website then provides basic information on that treatment plant (address, size, service population) along with a listing of the top-50 drugs and their estimated influent concentrations. For each drug compound, a graph pops up showing annual prescription trends along with a link to the RxList.com website where additional information on the drug can be found. The website also contains links to educational material on Water & Pharmaceuticals, Wastewater Treatment, and the influent model itself, providing the public with additional resources should they have further questions about this topic.

Website Address:

<http://faculty.virginia.edu/vpharmacalc>

Your Wastewater Treatment Plant

VA0025518
Moore's Creek Regional STP

695 Moore's Creek Lane
Charlottesville, VA
22902

Flow Rate: 15 MG/D
Service Population: 102,000



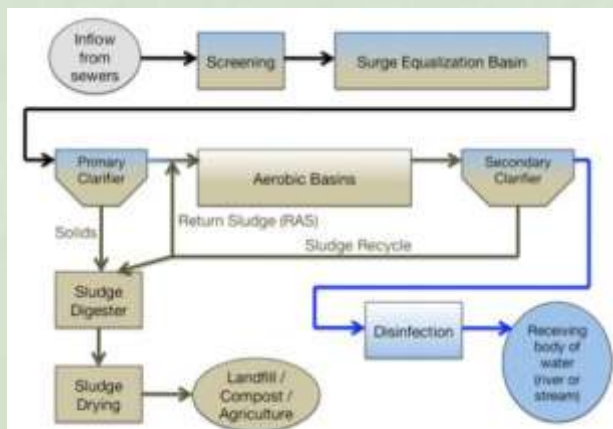
Estimated Drug Concentrations in the Inflow to Your Wastewater Treatment Plant

Rank	Drug Name	Estimated Concentration (nanograms/Liter)
1	Metformin	71,063
2	Amoxicillin	35,712
3	Cephalexin	32,953
4	Azithromycin	24,866
5	Gabapentin	21,370
6	Valacyclovir	9,510

Details about Metformin are available at the [RxList](#)

Annual Prescriptions for Metformin (10,000,000s)

Year	Prescriptions
2004	3.1
2005	3.8
2006	4.1
2007	4.4
2008	4.8
2009	6.0

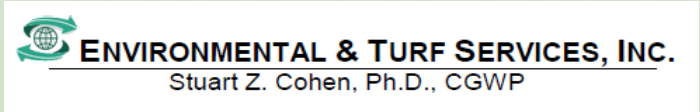


Click on a wastewater treatment process in the figure above to learn more about how municipal wastewater is treated in the US and also to see what effect each treatment is expected to have on PCPPs.

Special Thanks to our current Sustaining Sponsors!



Associate Sponsors





**Engineering and Construction
Environmental Services
National Security
Professional Services
Telecommunications**

Versar is a global project management company providing sustainable solutions to government and commercial clients in construction management, environmental services, munitions response, telecommunications and energy.

Versar provides tailored and secure solutions in harsh environments and offers specialized abilities in rapid response, classified projects, and hazardous material management.

Our unwavering commitment to quality, safety and best value ensures the highest returns for our clients, shareholders and employees.



Versar Corporate Headquarters
6850 Versar Center Springfield, VA 22151
703.750.3000
www.versar.com



Delivering integrated approaches to ecosystems management



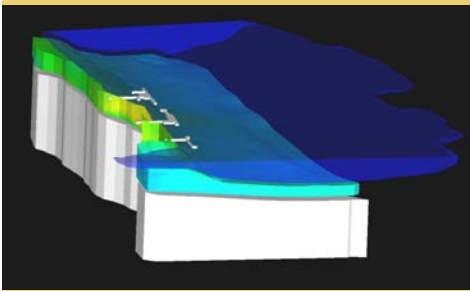
As a global leader in environmental analysis, engineering, construction, and operations, CH2M HILL is uniquely positioned to integrate a full array of services for our clients including:

- Ecological risk assessment and management
- Net environmental benefit analysis (NEBA)
- Ecosystem restoration
- Natural resource and asset management
- Environmental documentation

ch2mhill.com



Integral Consulting Inc. is a national science and engineering firm providing multidisciplinary services in the fields of health, environment, technology, and sustainability.



We are currently seeking highly motivated individuals for the following positions to support our growing environmental practice on the East Coast:

- [Mid- and Senior-level Engineers](#)
- [Mid- and Senior-level Geologists](#)
- [Mid-, Senior-, and Principal-level Hydrogeologists](#)
- [Principal-level Program Manager](#)
- [Senior Ecological Risk Assessor](#)

Why work for Integral?

Technically Stimulating

Every day, our staff is involved in a diverse range of projects for a variety of clients—applying skills and making recommendations that lead to positive change.

Unique Collaboration

The Integral name reflects our very purpose: To gather teams of professionals with distinctly different yet complementary skills, and to apply their integrated knowledge and perspective in ways that surpass our clients' expectations.

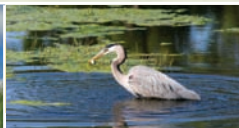
Supportive Environment

Outstanding benefits include company-subsidized medical, dental, and vision plans, company-paid life and short- and long-term disability insurance, a 401(k) plan and company match, flexible spending accounts (cafeteria plan), health club reimbursement of \$20 per month, and vacation/sick leave.

For more information, please visit our web site at www.integral-corp.com/careers

Health ■ Environment ■ Technology ■ Sustainability

www.integral-corp.com



Creating Value ...

Sustainable solutions for today's environmental challenges require broad expertise, practical experience, and prudent application of technology. Baker's environmental professionals combine these crucial aspects to help clients meet their challenges and succeed.



... Delivering Solutions

Environmental Engineering, Investigation and Restoration • Permitting & NEPA Support • Program Management
Risk Assessment • Site Assessment • Site Remediation • Multi-Media Compliance • Cultural Resources

*Creating value by delivering
innovative and sustainable solutions
for infrastructure and the environment.*

Baker

For more information, contact John Mentz, Vice President, Environmental Services
757.631.5417 or jmentz@mbakercorp.com

1.800.553.1153 • www.mbakercorp.com



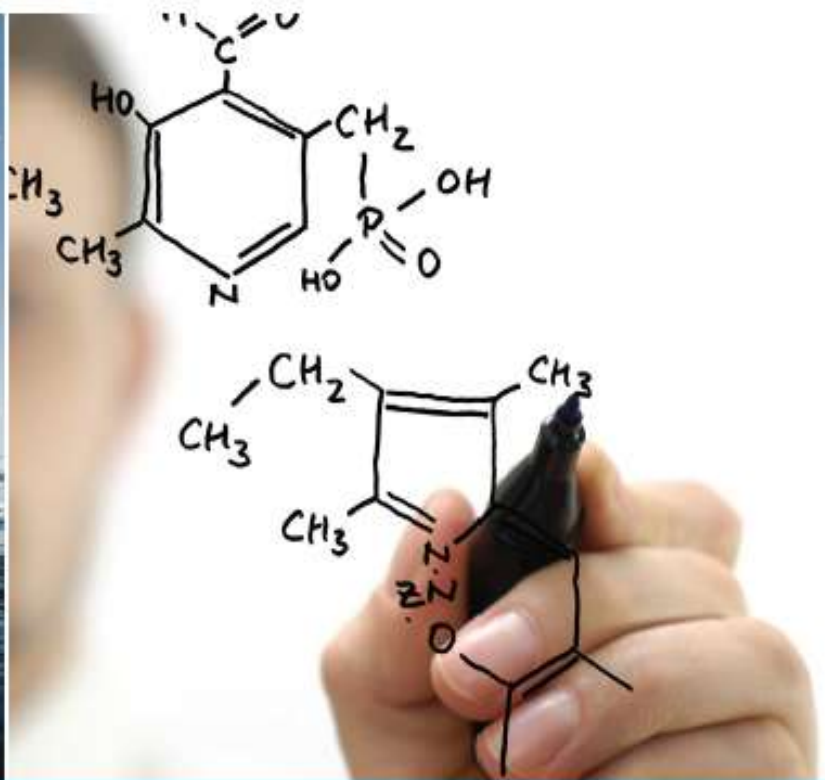
Towson University offers a graduate degree in Environmental Science that is an interdisciplinary program focused on environmental issues and problems faced by metropolitan areas. The program offers both a thesis and non-thesis track with courses offered in the late-afternoon and evening. Graduate assistantships are available for thesis track students. Research opportunities are available with faculty working in the Urban Environmental Biogeochemistry Laboratory as well as the departments of chemistry, biology, geology and geography.

For more information visit our website at:

http://www.towson.edu/ess/grad_programs.asp



UEBL
URBAN ENVIRONMENTAL BIOGEOCHEMISTRY LABORATORY



Focused on our clients' most visible challenges.

Ecosystem Sciences & Restoration
Ecological Risk Assessment
Human Health Risk Assessment
Product Registration and Development
Natural Resource Damage Assessment
Contaminated Sediment Management
Sustainability Solutions

www.arcadis-us.com

- More than 15,000 employees in more than 300 offices worldwide.
- More than 3,500 U.S.-based scientists and engineers.
- Providing innovative approaches to the most challenging scientific problems.

Imagine the result

 **ARCADIS**
Infrastructure · Water · Environment · Buildings

**Resolving Complexity
Enabling Progress**

MATRIX**NEW**WORLD

**Environmental Engineering
Geotechnical Engineering
Civil Engineering
Ecology/Natural Resources
Spill Response
Surveying &
HD Laser Scanning**

**Lawrence D. Malizzi, PG
Vice President
lmalizzi@matrixnewworld.com
302.824.7074
WBE/DBE/SBE Certified**





Low-Level Tissue & Sediment Experts

 **Columbia
Analytical Services™**

610.585.3420 | www.caslab.com



360° ENGINEERING AND PROJECT DELIVERY SOLUTIONS



For more information Contact:

Joseph Steinbacher
joseph.steinbacher@obg.com

11350 McCormick Rd | Hunt Valley, MD

443-255-9184

www.obg.com



NOW AVAILABLE

ACIScience.org

Your online source for ACI's scientific and technical information on the safety and benefits of cleaning products and their ingredients.

Human Health

Risk Assessment

ENVIRONMENTAL HEALTH

Chemicals Management



american cleaning institute®
for better things

The American Cleaning Institute®

1331 L Street NW, Suite 650 · Washington, DC 20005

Phone 202-347-2900 · Fax 202-347-4110 · Email ACIScience@cleaninginstitute.org · www.cleaninginstitute.org

THE HOME OF THE U.S. CLEANING PRODUCTS INDUSTRY®

September 30, 2011



Dear Friend and Colleague,

On behalf of the membership and the Board of Directors of the Chesapeake/Potomac Regional Chapter (CPRC) of the Society of Environmental Toxicology and Chemistry (SETAC), I am asking for your support as a Corporate/Organizational Sponsor of CPRC for 2012. The benefits of your sponsorship to our Chapter are substantial, and include (but are not limited to): fostering interaction among our members (both professionally and socially),

sponsorship of scientific meetings and social events each year, development of a biannual newsletter, maintenance and updating of our website, and sponsorship of student awards that encourage and promote the research and professional development of our student members. Your support would play a key role in maintaining these activities, and help us achieve our goal of expanding the size of CPRC and the range of benefits that we can offer.

We offer two formal levels of CPRC Sponsorship for 2012: Sustaining and Associate. The Sponsorship categories and the benefits your company or organization will gain as a Corporate/Organizational Sponsor are summarized below. In addition to these formal categories of sponsorship, we recognize and welcome sponsorships that may be focused on specific areas (for example, a student travel award), or smaller level contributions.

2012 ANNUAL CPRC CORPORATE SPONSORSHIP CATEGORIES

Sustaining (\$500 or more)

Associate (\$250)

Benefits of Corporate/Organizational Sponsorship:

Acknowledgement and Complimentary Registrations

Corporate/Organizational Sponsors are acknowledged in each CPRC newsletter and on our website with a formal "Thank You," as well as the names and company/organizational logos listed by sponsorship level. Sponsors are also acknowledged at each CPRC meeting and event. Sustaining Sponsors receive two complimentary registrations for our spring meeting, and Associate Sponsors receive one complimentary registration.

Advertising

Sustaining and Associate Sponsors may submit advertising for their organization (i.e., for services and products) for inclusion in our newsletter at no charge. Sustaining Sponsors are permitted a full-page advertisement and Associate Sponsors may submit a half-page advertisement. Sustaining Sponsors may also utilize table space or other dedicated areas for display of corporate/organizational promotional literature at all CPRC meetings and events.

Job Postings

Sustaining Sponsors may submit job postings for inclusion in the CPRC Newsletter and on our website.

Please contact any member of the CPRC Board of Directors if you have questions. New and Renewing Corporate/Organizational Sponsors are encouraged to contact Chapter Treasurer Heather Govenor (hgovenor@mbakercorp.com) or Chapter President Joe Steinbacher (joseph.steinbacher@obg.com).

Please make checks payable to “Chesapeake and Potomac Regional Chapter – SETAC” and include a letter that states you are providing the check in support of the Chesapeake and Potomac Regional Chapter of SETAC. Please be sure to include the name and address of the individual to whom the receipt and letter of thanks should be sent. Sponsorships are valid for the 2012 calendar year.

Checks can be mailed to:
 Heather Govenor – Treasurer
 CPRC
 PO Box 3018
 Radford, VA 24143

Your sponsorship is very important to the continued success of our chapter. **THANK YOU!**

Officers

Joe Steinbacher	President
Larry Malizzi	Vice President
Judi Durda	Past President
Dan Lavoie	Secretary
Heather Govenor	Treasurer

Board of Directors

Melissa Grable
 Nazmul Haque
 Natalie Karouna
 Rebecca Lazarus
 Tom Purcell
 Todd Stueckle

The Student Pages

2011 STUDENT TRAVEL AWARDS

CPRC views our support of students as the most positive and productive part of our chapter. Therefore, we're pleased to announce that we will again be awarding Student Travel Awards for attendance at the Annual SETAC North America Meeting in Boston this November. The board has approved a total funding of \$1,000 to be divided up among a maximum of 4 qualifying students (\$250 each, with the potential for more depending on number of applicants).

To qualify for an award, you must be a current student member of CPRC since August 1, 2011. In addition, you must have an accepted platform or poster presentation at the SETAC-Boston meeting.

To apply: Please email your **name/address/affiliation, copy of your accepted abstract and SETAC NA session number/title, and supporting letter from your academic advisor to Heather Govenor (hgovenor@mbakercorp.com) by Friday, October 14th, 2011.** Soon after the 14th, the CPRC Board will inform the winners and checks will be given to qualifying students in Boston.

BENEFITS OF CPRC STUDENT MEMBERSHIP

- Reduced membership fee and registration fees at chapter conferences and meetings
- Opportunity to present research at chapter symposia and conferences
- Opportunity to interact with other students, as well as environmental professionals from government, academia, business and public sectors
- Updated news and information on the chapter web site & newsletter
- Opportunity for several student-oriented awards
- Networking opportunities (several students have met their future employers at CPRC meetings)

The Student Pages-Cont

Annual 2011 NASAC Student Art Contest

The North America Student Advisory Council (NASAC) is sponsoring the 3rd annual Student Art Contest! We invite you to showcase your creativity by entering our contest. Entries may include, but not limited to: *photographs, artwork, sculptures, paintings, film, music etc.* We ask that you use the following theme for your submission:

“Navigating the Challenges of Environmental Science”



Prizes will be awarded! First, second and third place winners will be announced at the 32nd Annual North America SETAC meeting in Boston, MA where your artwork will be displayed (if possible) at the NASAC booth. Submissions are due **on October 31, 2011**. All student members of SETAC are encouraged to enter, but you do not have to be attending the SETAC meeting in Boston in order to enter the contest.

Please submit your entries with the following information and any inquiries to: Jennifer.Cole@tiehh.ttu.edu

1. Name
2. Address
3. University
4. Explanation of how your art related to the theme (no more than three sentences)

The Student Pages-Cont

SETAC-NA BOSTON: STUDENT ACTIVITIES

As an undergraduate, a graduate student, or a professional in a postdoctoral fellowship, be sure to plan to attend the student functions at the SETAC North America 32nd Annual Meeting! Students are an important component of SETAC, and these events give all students an opportunity to exchange ideas and talk with peers from other research facilities. We've planned events that are informal, interactive, and inexpensive - we include the cost in your registration. We look forward to seeing you in Boston! Here are some things you don't want to miss:

Monday Noontime Seminar (11:50 am – 1:00 pm) : How to Successfully Network This event is free and open to all students but pre-registration is required. Lunch may also be purchased at the time of registration.

Monday Student/Mentor Dinner: After the poster session, plan to attend the Student/Mentor dinner at the Sheraton Hotel. You can't afford to miss this opportunity to mingle and network with many SETAC members! Your participation will strengthen your networks within SETAC and provide a valuable opportunity for discussion of scientific topics and career experiences. The event starts at 6:45pm and there will be informal mingling for half an hour followed by dinner. The cost of the dinner is included in your student registration and all students planning to attend must pre-register.

Wednesday Noontime Seminar (11:50 am – 1:00 pm) : Grant Writing: How to Write Effective Grants This event is free and open to all students but pre-registration is required. Lunch may also be purchased at the time of registration.



Wednesday Night Student Event (7:00pm - until...) Student Social Event at McGreevy's Irish Pub Free event for all students Appetizers will be served Sponsored by the North Atlantic Chapter of SETAC

<http://www.mcgreevysboston.com/>

The Student Pages-Cont

GET INVOLVED!

Green Team Boston Service Project Wednesday November 16th 9:00am - 4:00pm

How do you get high school students interested in environmental science? Invite them to SETAC for a day! Following on the success of volunteer service projects incorporated in the past two annual meetings, SETAC will once again offer members the opportunity to reach out and serve the host community. In Boston, we will invite a group of local high school students to the meeting on Wednesday morning for a first-hand look at environmental science and careers in the field. Volunteers will act as guides as the students attend platform sessions and explore interactive exhibits and poster sessions, a number of which will be set up especially for them. We hope that the volunteers, particularly graduate students, will find it rewarding to share their experience and enthusiasm with young people who may not have many other opportunities to talk with scientists or get a glimpse of scientists at work. If interested please contact Ashley Jessick at ashley.jessick@unmc.edu



SETAC-NA members (professionals and students) attending the Portland meeting in 2010, participated in the Clark Public Utility Stream Team Service Project and planted over 900 willow saplings along Salmon Creek in Vancouver, WA. This project was kindly sponsored by WESTON.

Opportunities for Involvement in NASAC

Did you know that SETAC-NA has a Student Advisory Council?

Did you know that the North America Student Advisory Council (NASAC) is lead by graduate students?

Do you know of a graduate student that is a natural leader with still two years of graduate education remaining that would make a great addition to NASAC?

If you know of a student interested in holding a leadership position within NASAC please encourage them to apply for the NASAC leadership position for the 2011-2014 term at <http://www.surveymonkey.com/s/WBZ8WTG> by **October 31st, 2011**.

The term is divided as follows:

- Nov. 2011 to Nov. 2012 - Vice Chair of NASAC
- Nov. 2012 to Nov. 2012 - Chair of NASAC
- Nov. 2013 to Nov. 2014 - Past Chair of NASAC

For more information students can contact the current Vice Chair, Ashley Jessick at ashley.jessick@unmc.edu.

Visible Pollutants in Osprey Nests

By: **Rebecca Lazarus & Barnett Rattner**

This past summer scientists from the USGS-Patuxent Wildlife Research Center and USFWS Chesapeake Bay Field Office in monitored osprey nests in Baltimore Harbor/Patapsco River, Back River, Anacostia and middle Potomac Rivers and Poplar Island. Osprey egg and nestling blood samples were collected for contaminant analyses.



A pair of work gloves (above) and a flip-flop (below) were found in nests in Baltimore Harbor, MD.

When checking the nests for eggs and chicks, many unusual items were found amongst the nest contents. It is well known that osprey have been observed using items of man-made origin in their nests. In 2011, everything from sunglasses to flip-flops were found in nests. Final nest checks in Baltimore Harbor and Back River revealed that every single nest that was monitored contained items reflecting the presence of man and his waste.



Besides children's toys (tennis ball and pool toys), clothing (gloves, shoes, shirts and undergarments) and trash (juice boxes, plastic bags and bubble wrap) that can conceal eggs, a large amount of cordage material was found. These items including balloon and kite strings, rope, wires and fishing tackle can pose hazards to osprey adults and nestlings alike. Birds can become tangled up in lines, impaled by fishing hooks and even ingest plastics which can lead to internal harm (e.g., intestinal impaction and perforation of digestive tract) and pose a choking hazard. Ingestion of plastics can also expose birds to the "invisible" contaminants.

CPRC Logo Redesign Contest!

To reflect the new life of the chapter, CPRC is looking to update our current logo. We will brainstorm what we want the logo to relay at the Boston chapter meeting, then hold a design contest. YOUR design may become the new banner of CPRC!

In addition, the winning designer will receive a free year's membership to CPRC and complimentary registration at our spring meeting. Stay tuned for more details.



With a 50-year track record of proven success, Kleinfelder delivers the right environmental solutions for the energy, facilities, federal, transportation, and water markets.

Exceptional Commitment To Quality

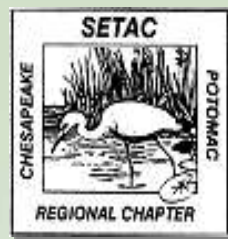
Kleinfelder is an employee-owned engineering, science, and architecture consulting firm providing solutions to meet our world's complex infrastructure and natural resource challenges.

www.kleinfelder.com



CPRC – WHAT WE DO

1. Sponsor bi-annual Chapter meetings
2. Publish two or more newsletters per year
3. Benefits of membership include:
 - Networking with fellow scientists and regulators in the region
 - Mentoring of young scientists
 - Opportunity to present research in scientific meetings
 - Experience with Society management
 - Opportunity to influence the direction of Chapter activities
4. Sponsor annual student travel awards
 - Travel money directly to students to subsidize costs of attending the annual SETAC NA meeting
5. Additional benefits of student membership
 - Reduced membership fee
 - Reduced registration fees at annual chapter conferences and meetings
 - Opportunity to present research at scientific meetings
 - Opportunity to interact with other students, as well as environmental professionals from government, academia, business and public sectors
 - Updated news and information through the chapter web site or newsletter
 - Opportunity for student-oriented awards
 - Networking opportunities (several students have met their future employers at CPRC meetings)
6. Offer company and institution visibility through sponsorship of CPRC activities or student awards



**Make sure to check out our website
<http://cprc-setac.com/default.aspx> for
information about our upcoming meeting
and the latest news!**

Upcoming Event

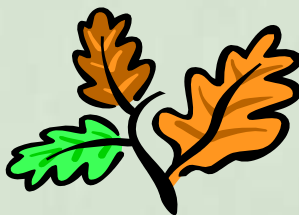
Patuxent Research Refuge

On **Saturday October 15th**, Patuxent will hold its **Annual Wildlife Festival** at the U.S. Fish and Wildlife Service National Wildlife Visitor Center from **10AM-3PM**. Come out and learn about the work done at Patuxent including several contaminants oriented displays. For more information and directions please visit:

<http://www.fws.gov/northeast/patuxent/events.html>

This year, Patuxent will be celebrating its 75th Anniversary. To view a timeline of Patuxent's rich history please visit:

http://www.pwrc.usgs.gov/75th/pwrc_timeline_20110830/





ENVIRONMENTAL & TURF SERVICES, INC.

Stuart Z. Cohen, Ph.D., CGWP

Providing water quality risk assessment, risk management, monitoring, and expert testimony services, including toxic torts.

- Regulatory assistance with EPA compliance (FIFRA and TSCA).
 - Computer simulation modeling.
- Focus on pesticides and fertilizers for golf courses and agriculture.
 - Focus on lead and arsenic for shooting ranges.
- Staff expertise in environmental chemistry and toxicology, agronomy, hydrogeology, hydrology, and soil physics.

www.environmentalandturf.com

Wheaton, MD
301-933-4700
ets@ets-md.com

SETAC North America Meetings for the next three years:

2012 - SETAC North America 33rd Annual Meeting
Long Beach, CA, 11-15 November

2013 - SETAC North America 34th Annual Meeting
Gaylord Opryland, Nashville, TN, 17-21 November

2014 - SETAC North America 35th Annual Meeting
Vancouver, British Columbia, 9-13 November



2012 SETAC Europe 22nd Annual Meeting

Securing a sustainable future: Integrating Science, Policy and People
Berlin, Germany, 20-24 May



APPLICATION FOR MEMBERSHIP – 2011

If you are a SETAC NA member, join CPRC by following the Regional Chapters link after your log-in to www.setac.org

SETAC: the **Society of Environmental Toxicology and Chemistry** is an independent, nonprofit professional society that provides a forum for individuals and institutions engaged in the study of environmental issues, management and conservation of natural resources, environmental education, and environmental research and development.

CPRC: the **Chesapeake and Potomac Regional Chapter** of SETAC is a non-profit organization started in the year 1983. CPRC's mission is to promote the exchange of information among environmental scientists in the Mid-Atlantic States.

Note: you do not have to be a SETAC member to be a member of CPRC.

Name: _____

Employed by: _____

Mailing Address: _____

Phone Number: _____ **Fax Number:** _____

Email: _____

Please Check the Appropriate Membership Class: Regular ___ (\$15) Student ___ (\$5)

Employment Class: Academic ___ Government ___ Business ___ Consulting ___

Education:

(highest degree, discipline, year)

Please enclose a check made out to CPRC. This form and check should be sent to:

Heather Govenor
P.O. Box 3018, Radford, VA 24143
Email: treasurer.setac.cprc@gmail.com